



TIBURON

The embracing views from the San Francisco skyline through the Golden Gate Bridge, Sausalito Harbor and Mt. Tamalpais abound from this contemporary hilltop home high above Tiburon.

Carefully sited on a 17,000± square foot, gently sloping parcel, the two-level home features vaulted ceilings, floor-to-ceiling windows, sliding glass doors, and multiple balconies and terraces perfect for entertaining and indoor/outdoor living in one of Marin's most desirable enclaves. Approached by sweeping stone steps, the home's upper level has generous living and dining spaces featuring French limestone flooring, multiple gas fireplaces and radiant floor heating, as well as a private master suite with spa-like bathroom and private garden terrace. A newly remodeled kitchen has top-of-the-line appliances and a breakfast room with direct access to the backyard featuring an al fresco dining terrace, level lawn and secret Mediterranean garden. The home's lower level has three bedrooms, a media room with 110" projection screen, and a large slate pool deck with pool/spa combo and panoramic views.

\$4,995,000

Bill Bullock

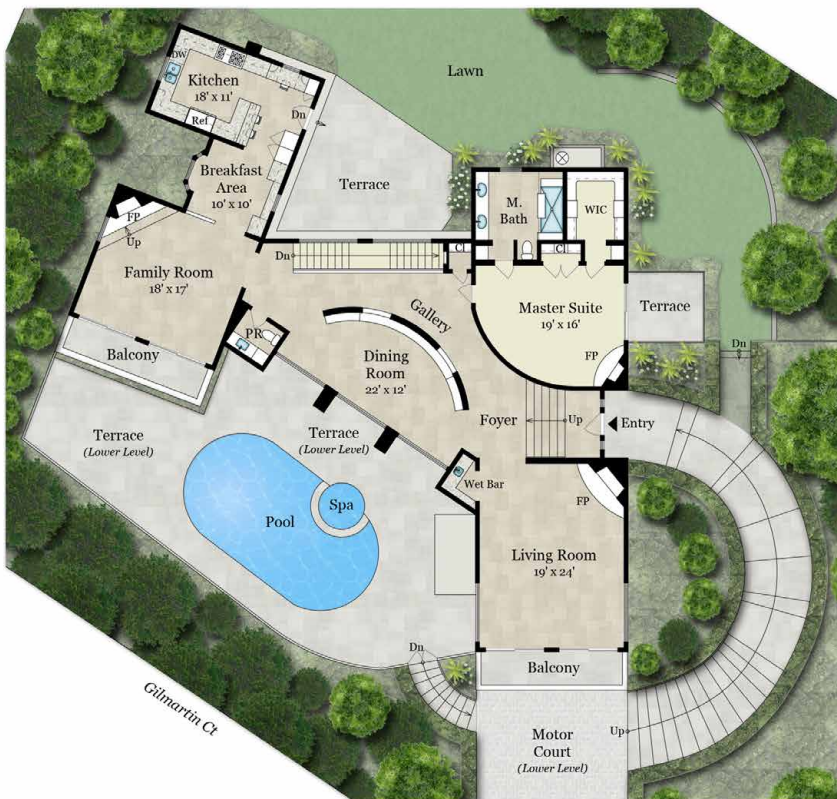
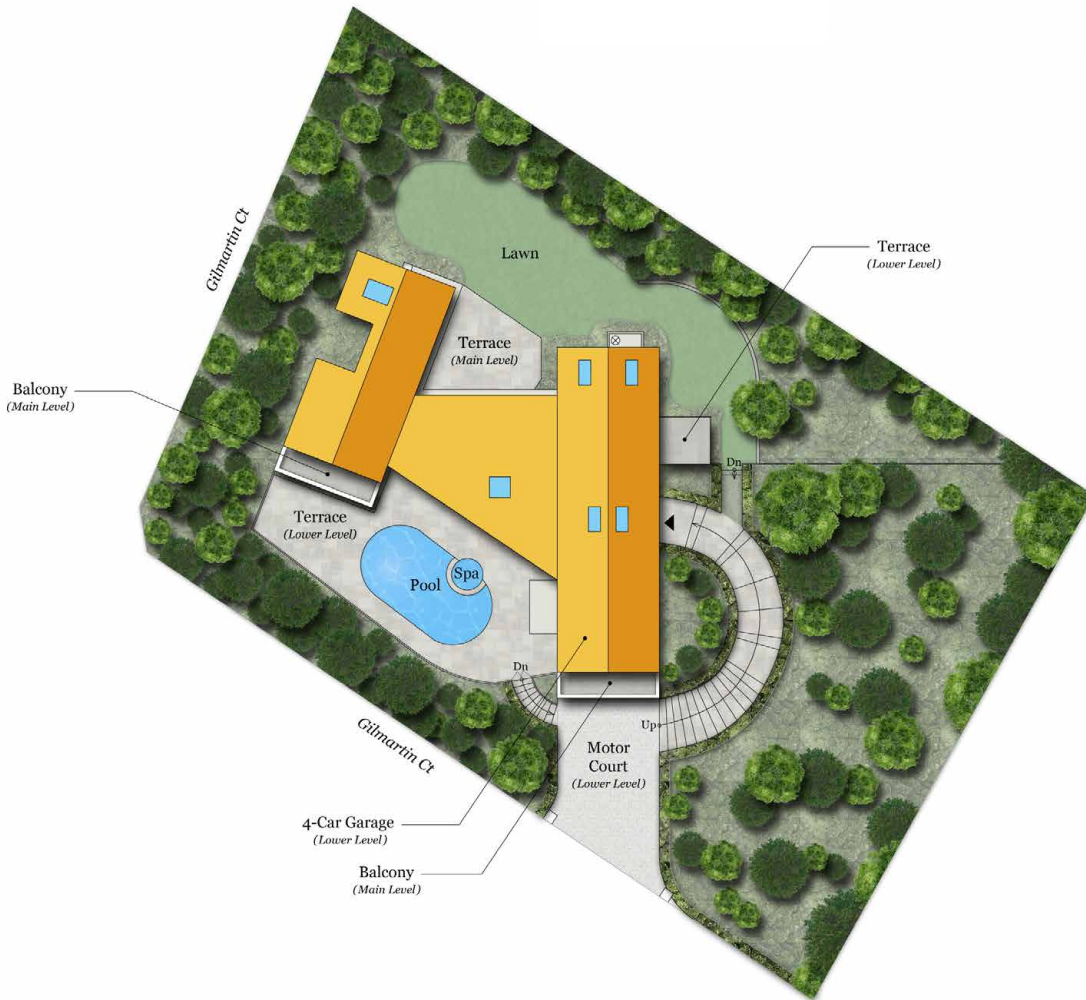
415.384.4000
CalBRE #00837358



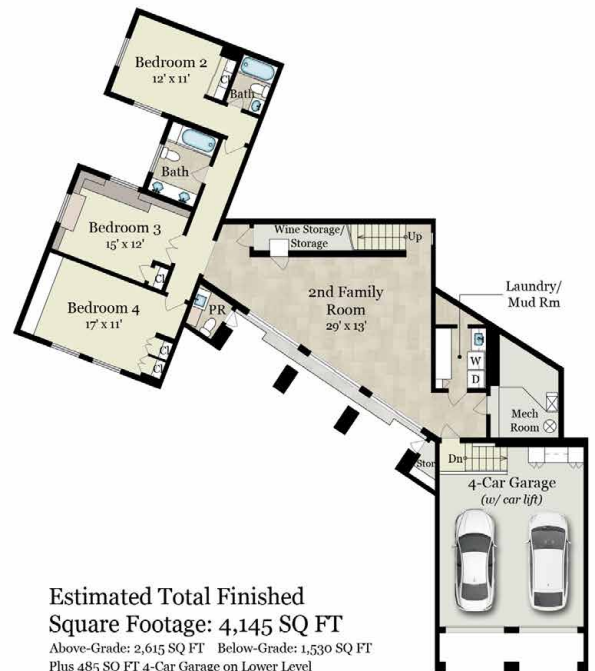
GBLOALESTATES.COM

Lydia Sarkissian

415.517.7720
CalBRE #01159670



MAIN LEVEL
2,615 SQ FT



LOWER LEVEL
1,530 SQ FT

Estimated Total Finished Square Footage: 4,145 SQ FT

Above-Grade: 2,615 SQ FT Below-Grade: 1,530 SQ FT
 Plus 485 SQ FT 4-Car Garage on Lower Level
 Plus 105 SQ FT Mech Room on Lower Level
 Plus 15 SQ FT Storage on Lower Level
 Calculated per ANSI Standard Z765-2003.

* Estimated Total Finished & Unfinished Square Footage: 4,750 SQ FT