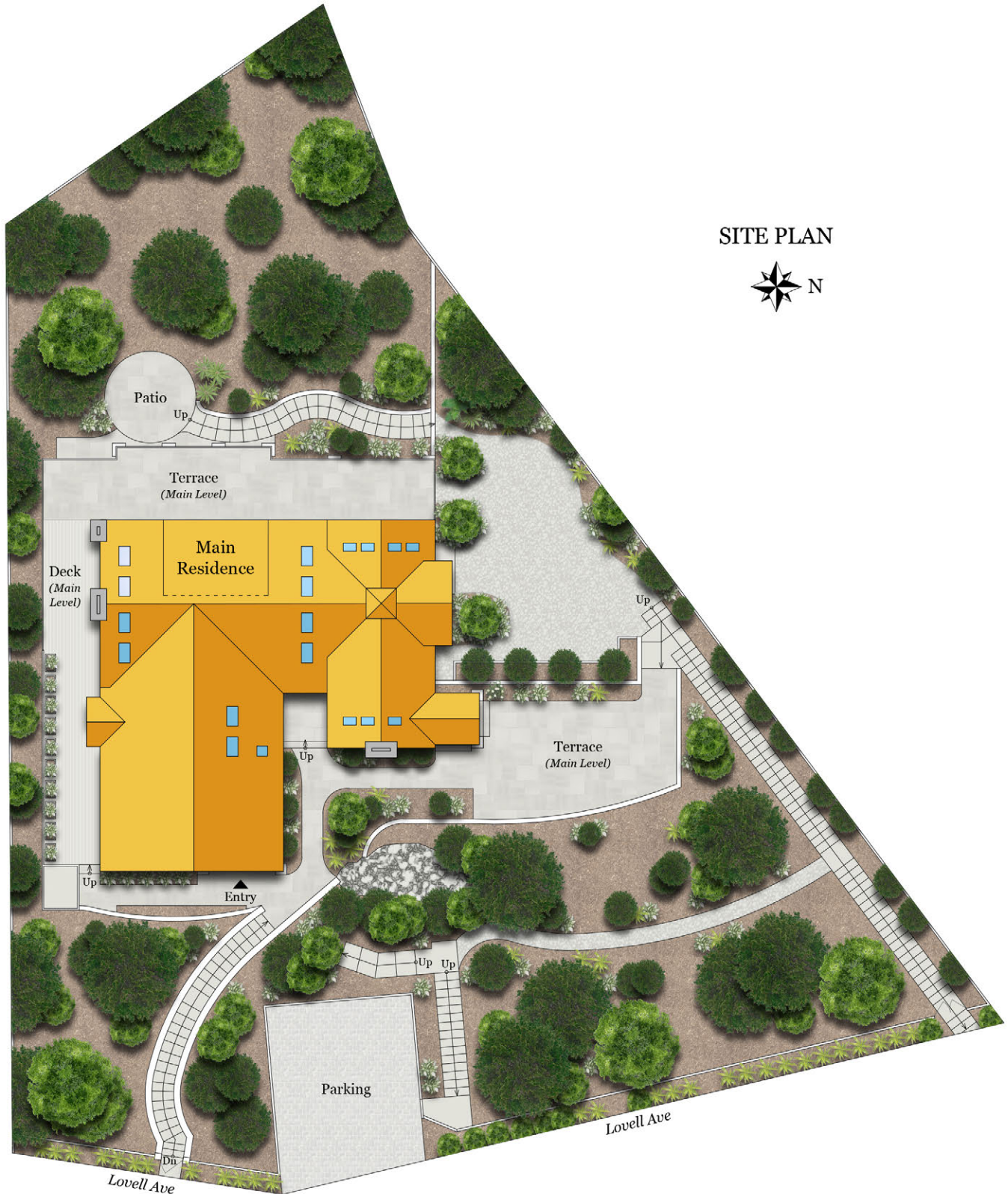


# 365 LOVELL AVENUE

MILL VALLEY, CA 94941



SITE PLAN



Rendering by Floor Plan Visuals, [www.fpvisuals.com](http://www.fpvisuals.com)  
All measurements are approximate. While deemed reliable, no information on these floor plans should be relied upon without independent verification.

Bill Bullock  
Tel: 415.384.4000  
Email: [b.bullock@ggsir.com](mailto:b.bullock@ggsir.com)

Lydia Sarkissian  
Tel: 415.517.7720  
Email: [l.sarkissian@ggsir.com](mailto:l.sarkissian@ggsir.com)

Magda Sarkissian  
Tel: 415.847.7913  
Email: [m.sarkissian@ggsir.com](mailto:m.sarkissian@ggsir.com)



# 365 LOVELL AVENUE

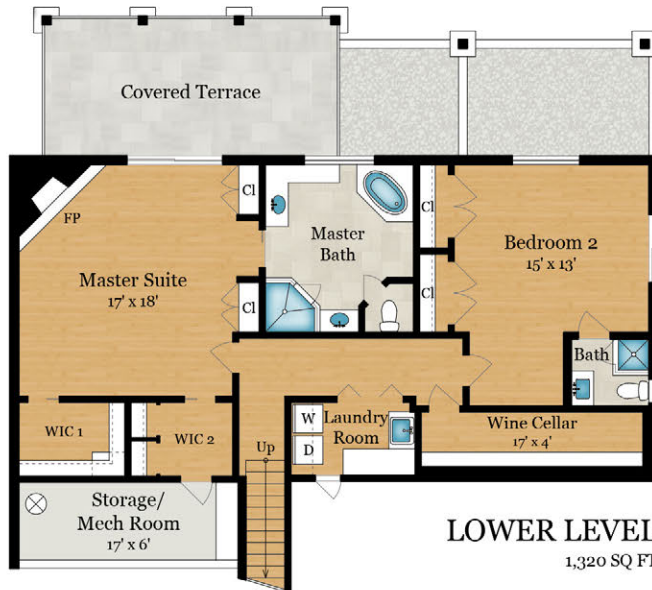
MILL VALLEY, CA 94941

Partial Lot Shown



## MAIN LEVEL

2,135 SQ FT



## LOWER LEVEL

1,320 SQ FT

### Estimated Total Finished Square Footage: 3,455 SQ FT

Above-Grade: 2,135 SQ FT Below-Grade: 1,320 SQ FT  
Plus 120 SQ FT Storage/Mech Room on Lower Level  
Calculated per ANSI Standard Z765-2003.

\* Estimated Total Finished & Unfinished Square Footage: 3,575 SQ FT

